

INTERNATIONAL PROGRAM 2025

BELGIUM
WALLONIE



ABOUT THE SVI



ABOUT THE SVI

The «Service Volontaire International» (SVI) is a non-profit, non-religious, non-political association founded and run by volunteers, with origins in France, Belgium, and Vietnam. SVI has received official recognition as a youth organization from the Belgian Ministry of Youth and is accredited by the European Commission to facilitate and coordinate Erasmus+ and European Voluntary Service (EVS) programs.

SVI actively participates in international exchange programs in over 80 countries, including Belgium.

Our primary focus is to prepare, deploy, and host volunteers who aspire to participate in international projects or work camps organized by local nonprofit associations.



Background

The SVI was founded in 2009 by former volunteers and aid workers. SVI is the Belgian independent branch of the Vietnamese NGO SJ Vietnam, which was established in 2004 in Hanoi with the support of both United Nations Volunteers and the Belgian Development Cooperation. Pierre De Hanscutter, co-founder of SJ Vietnam and founder of SVI, was working within these organizations at the time. In 2013, the French branch of our organization was established by former volunteers.

Our main activities

SVI is actively engaged in international exchanges with both the North and South. Its primary objective is to prepare, send, and welcome young volunteers within the framework of international projects organized by local nonprofit associations.

Our public

We are a youth organization, primarily targeting individuals between 18 and 35 years old. However, many of our European partners offer volunteering opportunities from the age of 16. Our offerings include individual projects as well as group experiences, accommodating youth movements, school groups, and families.

Our mission is to make volunteering accessible to everyone. That's why we collaborate extensively with Erasmus+ and the European Solidarity Corps to reach a broader audience, especially aiming to provide young people with limited financial, social, or cultural resources the chance to participate in this enriching experience. Through these efforts, we aspire to contribute to the development of responsible, critical, and supportive citizens.

Every year, nearly 1,000 young Belgians engage in volunteering projects, and approximately a hundred volunteers from around the world come to Belgium to share in this unique experience.

Missions and values

The organization primarily focuses on fostering intercultural exchanges among young people aged 16 to 30 worldwide, providing them with opportunities to participate in volunteering projects regardless of their age, gender, or skills. In essence, SVI's main objective is to make international volunteering accessible to a wide range of young individuals. Through these efforts, SVI aims to inspire young people to actively engage with and contribute to the societies they are part of, empowering them to become ethically and socially conscious global citizens who are critical and empathetic. Consequently, SVI promotes not only solidarity but also active citizenship. The ultimate goal of SVI is to raise awareness among young people about the challenges of our globalized society and help them comprehend the significance of solidarity, diversity, and development within such a society.

SVI firmly believes that young people should be the primary beneficiaries of opportunities like international volunteering, as they represent the future and will play a pivotal role in shaping tomorrow's society. SVI also holds the conviction that volunteering should not be a means to profit but rather a way to support local associations, enhance one's ability to adapt to foreign cultures, step out of one's comfort zone, and gain insights into both others and oneself. Furthermore, SVI believes that everyone can contribute to a project, regardless of whether they come from the North or the South, and that cultural exchanges can occur in both directions, fostering mutual learning and understanding.

What does volunteer mean for us?

First, voluntary work should be distinguished from humanitarian work. Volunteers sent to international work camps typically do not require specific skills other than their motivation (and sometimes a basic knowledge of English, as it is the primary language spoken in most work camps). Humanitarian actions, on the other hand, are carried out by professionals such as doctors or teachers in crisis situations.

Secondly, SVI actively opposes what is often referred to as «humanitarian tourism» or «voluntourism.» SVI firmly believes that volunteering and tourism are distinct activities. Voluntourism is a form of alternative tourism that combines tourism with volunteering in developing countries. People engage in voluntourism by going on holiday and simultaneously volunteering for a charitable cause during their stay, usually at a significant cost (prices can range from €700 to over €2,000, excluding transportation). SVI finds this morally unacceptable, as it often fails to provide financial support to local host organizations. Additionally, companies in this sector sometimes pose as nonprofit associations and organize voluntary projects based on their clients' desires, without considering the actual needs of local communities.

Thirdly, from SVI's perspective, volunteering is not about «saving» the Third World or imposing one's culture on less fortunate countries. It is not a mere vacation; rather, it is about providing both financial and human support to local organizations and communities. Volunteering is not primarily about enhancing one's CV, although it can be a valuable asset for one's future professional life. It represents a personal commitment that involves learning and adapting to another culture, language, and country, as well as embracing different customs and perspectives. This experience ultimately fosters the development of critical thinking and open-mindedness. It is an opportunity for individuals to actively engage and contribute to positive change. Engaging in international volunteering involves

sharing one's knowledge, skills, and experiences, while also cultivating qualities such as responsibility and organization. It fosters the development of trust and respect for others. International volunteering encourages individuals to question what they can learn from people, cultures, and countries different from their own. This process promotes mutual understanding and learning. Consequently, through volunteering, one can undergo a transformative journey, gaining a deeper understanding of oneself and the world we inhabit. In summary, volunteering is not solely about a «project»; it also entails learning to coexist with individuals who possess different habits and lifestyles.

Team organization

Since the establishment of SVI, Pierre De Hanscutter had been the sole full-time member for several years. However, in April 2015, two additional staff members were hired to support him in ensuring the smooth operation of SVI. Currently, the team of SVI is composed of nine workers at the Belgian office, including the director. In addition to the team, trainees and volunteers are brought on board each year, aligning with SVI's philosophy: its activities should be led by and for young people, granting them the opportunity to contribute to success, regardless of their backgrounds, beliefs, or gender.

SVI comprises several distinct departments, with each team member, whether working full-time or part-time, playing a crucial role within the organization and working toward common objectives. The various departments include coordination (overseeing outgoing volunteers and groups heading to Asia, Africa, Europe, North and South America, and Oceania. As well as incoming volunteers and groups coming to Belgium); communication (both external and internal); human resources; administrative services; legal services; accounting; translation; partnerships (with nonprofit and for-profit organizations); education and training sessions; IT; community outreach; funding; and EU affairs.



SERVICE VOLONTAIRE INTERNATIONAL BELGIUM

Our team



De Hanscutter Pierre

founder & director

pierre@servicevolontaire.org



Daria Proskouryakova

coordinator of the language projects
coordinator of African projects

language@servicevolontaire.org
africa@servicevolontaire.org



Noémi Galdos

coordinator of American & Latin American Projects
coordinator of Incoming Projects
coordinator of ESC & Erasmus+

amerique@servicevolontaire.org
incoming@servicevolontaire.org
erasmus@servicevolontaire.org



Arnaud Bajoit

pedagogical coordinator

arnaud@servicevolontaire.org



Muriel Germain

office manager

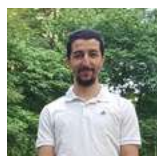
info@servicevolontaire.org



Elena Churikova

graphic designer

elena@servicevolontaire.org



Ayoub Aknin

IT specialist

ayoub@servicevolontaire.org

ABOUT OUR BELGIAN PROJECTS

Volunteers interested in taking part in a project in Belgium will have the option to select from short-term or long-term projects.

Our local partners, who have pledged their commitment to SVI, are dedicated to welcoming young individuals from across the globe to our projects. We conduct regular meetings with these partners to enhance awareness and provide information to the teams responsible for hosting volunteers, ensuring they are well prepared for the challenges and obstacles that may arise during the course of the project.



GROS
BISOUS



MERC

ABOUT OUR BELGIAN PROJECTS

How to apply for a project in Belgium?

1- One of the volunteers would like to participate in a volunteering project offered by SVI: what steps should they take?

At SVI, we firmly believe that volunteering should be a well-prepared experience. Therefore, it is crucial that any young person interested in participating in such an endeavor goes through a sending association.

Sending associations play a vital role in supporting volunteers. The coordinators within these associations assist young individuals in selecting the right project and are at the forefront of preparing them for this experience.

On the other hand, SVI assumes the role of a coordinating association. We act as the bridge between the sending association, the volunteer, and our local partners. We ensure that our local partners align with our philosophy regarding the hosting of volunteers and serve as the primary point of contact in case of issues, facilitating communication among all parties.

We strongly recommend beginning this process at least two months in advance to allow for all necessary preparations, including preparations for departure within the sending association, as well as handling administrative formalities before arrival (such as insurance, passports, visas, etc.). SVI also provides support for visa applications and issues invitation letters when necessary.

Therefore, prospective volunteers must go through their respective sending associations. Our coordinator for projects in Belgium will then send an application form that can be completed by the volunteer.

2- What skills will he/she need to demonstrate in order to gain access?

Volunteering involves participating in a project where motivation is the primary criterion. We are not engaged in humanitarian projects that demand specific expertise; instead, we encourage voluntary participation with the objective of contributing to a project and fostering cross-cultural encounters.

That's why, in the application form, we request that volunteers provide a clear explanation of their motivations

3- How long will he/she have to wait after sending the application?

Our policy is to request a response from our partners within 10 days of us sending the application. If the partner does not reply within this timeframe, we invite the volunteer to consider selecting another project. Additionally, we consistently emphasize the importance of a prompt response to our partners, stressing the need to accommodate the needs and expectations of young people.

4- What are the steps to follow sending this form?

When we receive a positive response from our partner, we arrange a video call involving the volunteer, the partner, and our incoming coordinator.

The purpose of this video call is to clarify the project details, discuss each party's expectations, and assess whether it is a suitable match for everyone involved.

The final decision will not be made during this video call; instead, both the partner and the volunteer will communicate it a few days later.

If both parties confirm their commitment to the project, we can then proceed with the confirmation procedures.

It is important to note that booking a plane ticket should not occur until after the confirmation has been received following the video call.

5- The project is confirmed: what comes next?

Once confirmed, SVI will send a series of documents to be completed by both the volunteer and the host association.

The volunteer may be required to provide SVI with these documents:

- Confirmation of flight tickets.
- Copy of passport and visa.
- Proof of insurance coverage.
- Certificate of good conduct.
- Certificate of good health.

All of these documents must be submitted prior to the volunteer's arrival at the project.

Our short-term projects

In Belgium, volunteers have the opportunity to participate in various well-known festivals, including music festivals, street art festivals, and fantasy film festivals. For these work camps, we are seeking 5 to 10 volunteers, depending on the demand from our partners. These volunteers will play a key role in festival activities, such as assembly and dismantling, waste management, ticket distribution, and more. In return for their contributions, they will have the chance to enjoy the festival.

It is important to note that this is not a free ticket to attend the festival but an opportunity to actively engage in a meaningful project. Volunteers should expect to take on responsibilities as assigned.

At SVI, we value diversity in all its forms, including gender equality and cultural diversity. We believe that such projects promote intercultural exchange, and therefore, we strive to ensure that volunteers on the same project come from as many nationalities as possible.

Each group of volunteers will have a designated meeting point predetermined by the project coordinator or a team leader. This team leader actively participates in the pre-arranged Skype sessions and plays a crucial role in facilitating communication throughout the project.

Preparations are made ahead of the project to enable volunteers to establish communication channels with each other and with the team leader. These channels may include social networks, WhatsApp, and other means of communication.

The team leader will actively participate in the project as a fellow volunteer while also assuming the role of ensuring a harmonious group dynamic and providing guidance on project activities. Additionally, the team leader will serve as the liaison between the group and the incoming coordinator, facilitating the prompt relay of any challenges or issues that may arise

Our long-term projects

Upon arrival, each volunteer will receive a warm welcome from either an SVI member, who will accompany them to their volunteering project, or a representative of the local association. In cases where the incoming project coordinator cannot be present upon arrival, a meeting will be scheduled in the following days for the volunteer to meet with them.

Our partners are committed to providing the best possible welcome to our volunteers, ensuring they are in an optimal environment to commence their projects.

For volunteers planning to stay in Belgium for more than a month, participation in one of our required preparation weekends is mandatory. These weekends provide an excellent opportunity to familiarize themselves with the SVI team and connect with young Belgians who are also embarking on their volunteering journey.

Furthermore, we regularly extend invitations to our international volunteers to engage in various aspects of SVI association life, including our dinners, social gatherings with local youth, and events organized by SVI volunteers.

Volunteers are an integral part of our association, and they are encouraged to actively participate in all our activities.

Important things to know

1- Visa

European citizens only require a national identity card or a passport for entry into Belgium.

Non-European citizens may need a visa. The visa application must be submitted to the embassy or Belgian consulate in your country of residence.

If your country of residence does not have an embassy or Belgian consulate, please get in touch with the nearest Belgian Embassy, typically located in a neighboring country.

The visa application process can occasionally be time-consuming. Therefore, it is advisable to apply for a visa at least four weeks before your planned departure. Visa info: <https://diplomatie.belgium.be/fr/venir-en-belgique/visa-pour-la-belgique>

If you need an invitation letter, you can contact us at incoming@servicevolontaire.org

To issue a letter of invitation, we require the following information:

- Last name.
- First name.
- Date and place of birth.
- Address.
- Passport number, including date of issuance and expiration
- Nationality.
- Project start and end dates.

Volunteers can get extra info at

<https://diplomatie.belgium.be/fr/conseils-aux-voyageurs>

2- Health

You need health insurance to cover your entire trip to Belgium (typically, the host has insurance to cover your work-related activities). Your sending association may assist you in finding suitable insurance. While no vaccines are required, if you plan to engage in physical work, we recommend getting vaccinated against tetanus and hepatitis. It's essential to visit your dentist before leaving home.

Ensure that you bring all the necessary medications with you, as it can be complicated to purchase them in Belgium without the required documentation. Additionally, the medication you need may have a different name in Belgium compared to your home country.

European volunteers should ensure their European Health Insurance Card is up to date, and it can be obtained for free!

3- How to prepare your luggage

It is essential that you pack all your belongings in a backpack rather than any other type of suitcase, as it can become very uncomfortable to transport after a long journey.

Belgium's geographical location gives it a typical temperate oceanic climate, which, of course, contributes to its reputation as a rainy country. However, let's not exaggerate! Generally speaking, there are no significant temperature variations between the South and the North of Belgium. That being said, the southern part may experience slightly colder winters (so don't forget your mittens for the entire country), while the northern part, particularly along the coast, can be a bit warmer during the summer. In fact, during the summer, you can even take a dip in the North Sea, so remember to bring your swimsuit along.

You would better not forget some useful things when you are thinking about traveling to Belgium:

- Sleeping bag, bedsheet, pillow, and mat (if specified in your project's information sheet), as well as towels.
- A TENT (if specified in your project's information sheet).
- Sunscreen and a hat
- Clothing and footwear suitable for varying weather conditions (even in summer) and outdoor activities.
- Your mobile phone (if you plan to stay for an extended period, it's convenient to purchase a Belgian SIM card)
- Personal items representing your home country
- (Posters, music, postcards, maps, videos, and food) and things from your family°
- Pocket money
- If possible, pack only ONE bag to maximize space in your dormitory; backpacks are highly recommended!

To find affordable flight tickets, we have compiled a list of budget-friendly airline companies. You can access this list at <https://travel.servicevolontaire.org>

4- Emergency phone numbers

If you encounter any trouble related to your volunteering project, call the SVI:

- Emergency phone number: 0044560158080
- Office phone number: +32 2 888 67 13

Office from Monday to Friday between 9am and 6pm.

Director : **De Hanscutter Pierre**

5- Covid

You can access essential information regarding the situation in Belgium via this link:

www.info-coronavirus.be



ABOUT BELGIUM

ABOUT BELGIUM

While Belgium may be small, it holds a significant place on the international stage and consistently ranks among the world's top places to live. The multicultural diversity of Belgium lends its capital, Brussels, a vibrant atmosphere, with a wide range of global services and amenities available to ease the transition for even the newest expatriates.

At first glance, Belgium boasts numerous top attractions. It is the headquarters of the European Union (EU), situated within a short distance of several international capitals, and is home to three official languages (French, Dutch, and German), along with a substantial international community. Beyond its global presence, Belgium is renowned for its delectable fries, iconic character Tintin, exquisite chocolates, and a rich variety of beers. For expatriates eager to embrace Belgian culture, relocating to Belgium promises a plethora of new experiences.

Belgium is renowned as one of the finest places to live

Belgium has something for everyone. If you are a fan of the beach and cycling, the allure of our coastline will be irresistible!

Our historic cities, renowned for their art and culture, will captivate you, whether you have a penchant for history, architecture, or culture. Belgians are true connoisseurs of gastronomy, and they take great pleasure in sharing their culinary delights, including beer, cheese, chocolate, pralines, chicons, Flemish carbonades, speculoos, and, of course, our famous French fries.

Moreover, Belgium is a hub of entertainment: our cultural scene is vibrant, offering a plethora of exhibitions, concerts, festivals, theatre performances, and dance shows. Moreover, when the night falls, the festive spirit comes alive

Cost of living

The healthcare system in Belgium is of exceptional quality, known for its high standard of medical care.

Medical care is readily accessible, and supported by extensive university hospitals. Additionally, it is often more cost-effective compared to the United States. Belgium's shorter waiting times have made it a prime destination for medical tourism.

Furthermore, the cost of living is relatively affordable. Brussels, a favored destination for numerous expats, offers lower living costs compared to other Western European capitals like London, Copenhagen, Vienna, and Zurich, as highlighted by Mercer's Cost of Living rankings.

The cost of living in Brussels is **24% cheaper** than in Paris.

The cost of living in Brussels is **46% more expensive** than in Prague.

The cost of living in Brussels is **21% cheaper** than in Amsterdam.

The cost of living in Brussels is **148% more expensive** than in Buenos Aires.

The cost of living in Brussels is **26% cheaper** than in Washington.

The cost of living in Brussels is **78% more expensive** than in Mexico City.

The cost of living in Brussels is **33% cheaper** than in Sydney.

The cost of living in Brussels is **12% more expensive** than in Charlottesville, Virginia.

The cost of living in Brussels is **5% more expensive** than in Madrid.

In addition to this, Belgium features an efficient public transportation system with a seamlessly integrated network of buses, metros, and trams. This system makes it convenient to embark on weekend getaways within Belgium (some weekend destinations even offer a 50 percent discount) or to easily visit neighboring countries.

Public Transportation Costs in Belgium

Most Belgian cities are well connected by public transport. In major cities, a transport pass for the month costs around €35–€50. These passes can be used on every mode of public transportation. A single fare usually costs around €2–€4.

Taxi rates start at around €4 in Brussels. In general, it costs two euros to buy a 1 km taxi ride in Belgium. As this is an average, it can go as low as 1.66 € and

as high as 2.78 € depending on the time of year. This price for one km in TAXI is higher than the cost in France (by 15%). In other major cities, the starting rate varies but the rate per kilometer is generally in the same range.

The journey between Zaventem airport and the center of Brussels costs around 45 euros. However, we encourage you to take the train and public transport.

Dining Out Costs in Belgium

Belgium, particularly its capital city of Brussels, is renowned for its culinary excellence. Brussels has earned comparisons with cities like New York, Hong Kong, and Paris due to its exceptional dining experiences, offering a wide range of high-quality cuisine. However, it's important to note that fine dining in Brussels can be relatively expensive. Nonetheless, there are plenty of more affordable options available, ensuring that food enthusiasts can indulge without restrictions. Budget-friendly meals for one person typically cost between €10 and €15, while a half-liter of commercial beer is priced at approximately €4.

Emergency

Take note of these essential emergency numbers in case you find yourself in a crisis in Belgium, along with a list of Belgian helplines for support and information.

For residents in Belgium, it's crucial to familiarize themselves with Belgium's emergency numbers in advance. Belgium provides a variety of important emergency numbers and helpful helplines, depending on the nature of the emergency or crisis. Below is a list of the most critical Belgian emergency numbers to keep handy.

Additionally, here are emergency phrases and medical terms in both French and Dutch:

- **Accident:** Accident / Ongeluk.
- **Emergency:** Urgence / Spoedgeval.
- **Ambulance:** Ambulance / Ziekenwagen.
- **Doctor:** Médecin / Doctor.
- **Police:** Police / Politie

- **Very sick:** Très malade / Heel ziek.
- **I need an ambulance:** J'ai besoin d'une ambulance / Ik heb een ziekenwagen nodig.
- **I need a doctor:** Il me faut un médecin / Ik heb een doctor nodig.
- **I need the police:** J'ai besoin de la police / Ik heb de politie nodig.

Emergency phone number

Call: 112

This emergency number is accessible free of charge throughout the European Union (EU), as well as in select other countries like Israel, Norway, and Russia. It should only be dialed in genuine emergency situations. You can also use 112 to report serious accidents, instances where someone needs to be extricated from a vehicle, situations involving dangerous large animals like horses or snakes, or to request assistance in clearing roads following a storm. One distinctive advantage of the 112 number is that it can be dialed from any type of telephone, including mobile phones without a SIM card.

Operators in Belgium are typically fluent in English, French, Dutch, and occasionally German. When calling, be prepared to provide precise details about the location, address, and information regarding the accident and any injured individuals. Do not disconnect the call until you have received assistance.

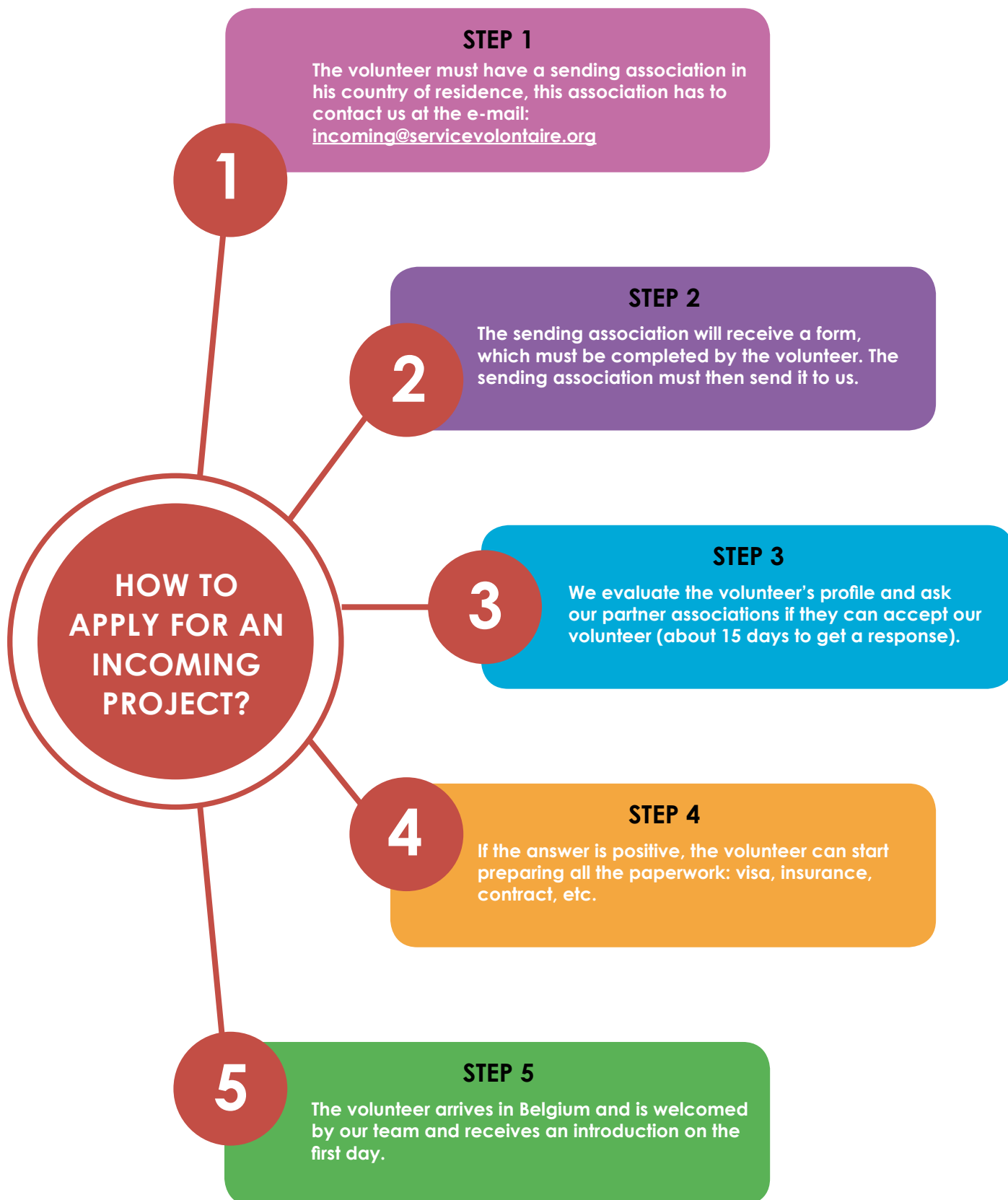
Phone numbers commencing with **0800** are also toll-free.

Lost or Stolen Belgian IDs, Passports, and Residence Permits

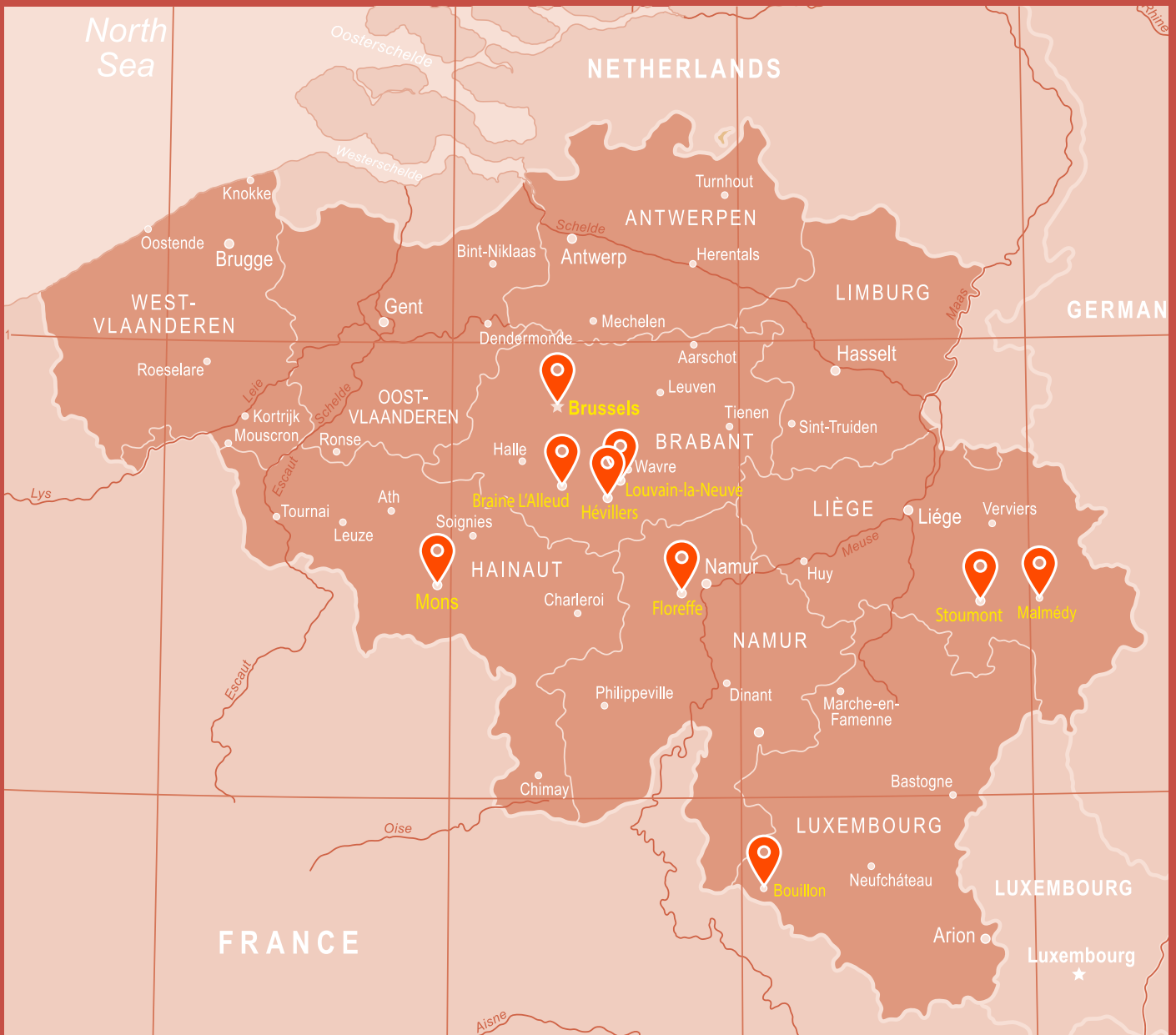
To report lost or stolen documents, contact the government service **DocStop at | Call 00800 2123.**

2123 | Available 24/7

HOW TO APPLY



SUMMARY OF THE INTERNATIONAL PROJECTS IN BELGIUM 2025



Code	Name	Place	Dates	Type	N° Vols	Age limit	Remarks
SVI_ESPERANZAH_2025	Esperanzah Festival	Floreffe	11/07/2025 – 1/08/2025	ENVI – FEST	5	18+	Motivation Letter. Project with teamleader
SVI_DOUR2025	Dour festival	Dour	16/07/2025 – 20/07/2025	ENVI – FEST	10	18+	Motivation Letter
22-25	Côte à Côte	Louvain-La-Neuve	Permanent project	EDU – FEST CULT – ART	1	18+	Motivation Letter
SVI-AJJB25	Auberge de jeunesse Jacques Brel	Brussels	Permanent project	ENV – CULT LEAD	2	18+	Motivation Letter
BE-SVI-fagotin	Le Fagotin	Stoumont	Permanent project	ENVI – EDU ANI	2	18+	Motivation Letter
SVI_REN_2022	Renaissance	Braine L'Alleud	Permanent project	SOCI – DISA EDU	2	18+	Motivation Letter
SVI-BAUTO-EXT	Auberge de jeunesse de Bouillon	Bouillon (Province du Luxembourg)	Permanent project. From March to September	EDU – SOCI MANU	2	20+	Motivation Letter
SVI-B	Auberge de jeunesse Malmedy	Malmedy (Province de Liège)	Permanent project. From March to October	EDU – SOCI MANU	1	18+	Motivation Letter
SVI-ADJ Ms	Auberge de jeunesse Mons	Mons (Hainaut)	Permanent project (except in July and August). Project duration: 1 to 6 months	EDU – SOCI – MANU	1	18+	Motivation Letter
DIY-25	Improvement work in the SVI office	Ottignies-Louvain-la-Neuve	Permanent project	MANU – LANG-L	3	18+	Motivation Letter

ESPERANZAH !

Code	SVI_ESPERANZAH_2025
Name	Esperanzah Festival
Location	Floreffe
Dates	11/07/2025 - 1/08/2025
Type	ENVI – FEST
Age	18+
Volunteers	5
Fees	125€

The conditions (participation fees, visa, accommodation, food, dates and cancellations) are subject to change



The project includes:

- Introduction course
- One night at the bed and breakfast in Louvain-la-Neuve
- Follow-up during the whole project
- Invitation letter or additional documentation for visa application.
- Accommodation in a shared room
- Train tickets from Louvain-la-Neuve to Floreffe
- Meals

Not included in the project:

- Vacation days
- Pocket money
- Travel expenses
- Flight tickets
- Health insurance (mandatory to present before arrival)
- Transportation from the airport to the project

Optional:

- Transportation: to and from the airport (taxi) : 160€ (variable price)

Presentation of the partner

Esperanzah! is a world music festival that has offered a varied programme of well-known and lesser-known artists since 2002. Every year it is an alternative line-up, open to the world and based on discovery. A programme that expresses cultural diversity and deliberately goes against the tide of monopolies, algorithms and the mainstream. It takes place at Floreffe Abbey, located between Charleroi and Namur in Belgium.

Z ! Association, organizer of the Esperanzah music festival, aims to design and organize remarkable sites, events or cultural and social activities.

Volunteer work

Volunteers will be responsible for cleaning the festival site. They will collect waste so visitors can attend concerts in a welcoming and safe site. They will also be assigned physical tasks. They will have to make festival-goers aware of the protection of the environment. Volunteers will work from 9am to midday and from 1pm to 5pm. Your job is to keep the area clean and tidy. During the festival, volunteers are free to enjoy too! The tasks that need to be done can be physical.

Accommodation

Volunteers will be accommodated in a dormitory. Kitchen, shower and toilet will be available, but they will share it with another group of volunteers. There will be no washing machine. You will be asked to bring a mattress and a sleeping bag. Do not forget to bring working clothes as it can be rainy from time to time.

Food

Three meals a day are provided for volunteers. Vegetarian volunteers will receive special meals. Only during the festival and not during the days off.

Specific information

Clothing: Boots or hiking shoes (you might not want to take nice shoes because you might get VERY dirty). Do not forget, everything will take place outside. Work clothes (for the construction work), and comfortable clothes (for the festival). Summer



clothes AND winter clothes because it can get warm or cold!

In Belgium we can have very rainy summers with temperatures around 15°C but we can also have periods of high heat with dry weather and temperatures around 35°C, so we have to check the weather before leaving and be ready for anything.

Volunteers need to bring clothes that dry fast because if you get wet, you might have to change clothes several times a day. If you think about bringing clothes that dry fast, you will not end up with only wet clothes left.

Meeting point

Rue du Poirier, 8, 1348 Ottignies-Louvain-la-Neuve, Belgium. Arrival days are from Monday to Friday between 11am and 4pm. Outside these hours, we recommend you to take a hotel room on your own.

To get to the meeting point you can take the train from the airport: <https://www.belgiantrain.be/en>.

Camp language

The project allows you to speak either French or English. You will meet people from all over the world, so English will often be the language used.

Do not forget: you will work with 9 other volunteers on the project. The group can be a support even for linguistic understanding. We do not ask for bilingual people.

Location



- **Nearest airport:** Brussels South Charleroi Airport – 29 km
- **Nearest train station:** Floreffe Station – 2 km
- **Transport between the railway station and the place of volunteering:** Bus 10 (12min)

About Floreffe

Floreffe is a French-speaking town of Belgium located in the Walloon Region in the province of Namur.

There is a fabulous range of things to do in and around this destination. Nothing compares to watching great masterpieces when your soul needs to be transported. By looking at the fabulous works of art in the Félicien Rops museum, see if you can find a deeper meaning in them.

DOUR FESTIVAL

Code	SVI_DOUR2023
Name	Dour Festival
Location	Dour
Dates	16/07/2025 – 20/07/2025
Type	ENVI – FEST
Age	18+
Volunteers	10
Fees	50€



Presentation of the partner

The Dour Festival is a European festival of alternative, independent and multicultural music organized by Carlo Di Antonio, taking place every summer in Belgium at Dour, near Mons, for 5 days on the Dour wind farm, near the French border in the province of Hainaut. The festival is getting bigger and bigger and counts more and more festivalgoers coming from all over the world.

More than 200 artists perform on six stages. More than anything else, it is a unique concept and a wonderful atmosphere. More than 1,000 journalists came to the festival. These professionals are usually from Europe, but every year we can note the presence of journalists from Australia, Canada, and the United States. The programming is more international than ever, but we devote a large part of our programme to Belgian artists.

Volunteer work

Volunteers will be part of the GREEN BRIGADE. Your job is to keep the area clean, tidy, and safe. The team will collect and recycle the waste to give the festival-goers a nice and safe ground. Volunteers will also have to do physical work (built the stage, carry heavy material...). Do not imagine you will simply enjoy the festival. It will be hard work too! Your job will be the same throughout the whole festival. It could be heavy and repetitive. Volunteers will have to work around 6 hours a day, probably early in the morning. During your free time, you will be free to go to the festival and enjoy the concerts (concerts start at noon and end at 5.00 am).

Accommodation

A camping site is reserved for the volunteers. It is well located, outside the festival, in a quiet environment. There is also a bar. There are showers and toilets in the camping. You need a flashlight, toilet paper, bath towel, basic pharmacy, earplugs... You can expect not to have hot water to shower. You need to bring all the things that will be useful to your stay because you will not be able to buy anything during your stay over there! You need a tent and a sleeping bag (+ camping mattress, pillow,...) and all you think you need to go camping (there is no kitchen). You need to bring your own material to fix your tent if you need to do so! There will not be any building where you can sleep. If you do not bring your own tent and camping material, you will have to sleep in the mud!

Food

The organization will give volunteers 1 ticket for a sandwich and 4 tickets for drinks per day.

You need to have a small budget for other meals (about 10€-15€/day). There are a lot of shops, small snacks (pizza, fries, sandwich, Chinese...) and bars in Dour. If possible, take kitchen material like a camping stove, plates, cutlery... to cook for yourself in the camping.



Specific information

Take hiking shoes as it can be very muddy. Working clothes, warm clothes (it can be very cold sometimes and at night). You need to bring all your camping gear! (Tent, mattress, sleeping bag, etc.)

Camp language

The project allows you to speak either French or English. You will meet people from all over the world, so English will often be the language used.

Don't forget there will be 10 of you on the project. The group can be a support even in the comprehension of linguistic. We don't ask for bilingual people.

Location



Nearest airports:

- Brussels South Charleroi Airport – 45 km
- Zaventem Airport (Brussels Airport) – 62 km

- **Nearest train station:** Saint-Ghislain Station – 10 km
- **Transport between the railway station and the place of volunteering:** Bus 7 (25min)

Dour Festival also organizes shuttle buses. Several bus options are available from France, Belgium, Luxembourg, Holland, Switzerland, and England.

The bus packages all include:

- Return bus journey from the city of your choice
- The presence of a coordinator during the journey
- Entertainment during the journey

You will find all the information via this link: <https://www.dourfestival.eu/fr/practical/getting-there/by-bus/>

About Dour

Dour is a very small town. You will not have to do anything else on site apart the festival. It is also possible to visit Mons.

With a characterful medieval center climbing up a hill and the Grand Place, Mons is located 20km from Dour and had a substantial facelift in 2015. At that time, it was a European capital of culture. The legacy is full of entertaining modern museums, which make for an excellent visit and keep you busy for two or three days. One museum shows war in splendid fashion, while another celebrates the riotous Doudou festival, which stars St George, a dragon, Sainte-Waudru, devils and thousands of beery revelers.

CÔTE À CÔTE

Code	22-25
Name	Côte-à-Côte Go asbl
Location	Louvain-La-Neuve
Dates	Permanent project. Project duration: 1 to 6 months
Type	SOCI – DISA – EDU
Age	18+
Volunteers	1
Fees	Fee for the first month: 111€

The conditions (participation fees, visa, accommodation, food, dates and cancellations) are subject to change



The project includes:

- Introduction course and welcoming
- One cultural activity
- Follow-up during the whole project
- Invitation letter or additional documentation for visa application.
- Dinner
- Accommodation in a shared room

Not included in the project:

- Vacation days
- Travel expenses
- Flight tickets
- Health insurance (mandatory to present before arrival)
- Transportation from the airport to the project
- Breakfast and lunch (there are several stores nearby)

Optional:

- Online French course for 10 sessions of 1h each: 180€
- Transportation to and from the airport (taxi): 160€ (variable price)

Presentation of the partner

The Côte-à-Côte association has built a passive home in the heart of Louvain-la-Neuve for young adults with motor disabilities such as cerebral palsy (CP). It thus offers these young people the opportunity to live their lives independently.

Côte-à-Côte Go ASBL has set itself the mission of creating an environment that enables CPs to realize their life project through autonomy and solidarity in order to become actors in society. This project also allows the inhabitants and friends of Côte-à-Côte Go ASBL, with or without disabilities, to enrich themselves by sharing a life experience.

A pilot project in terms of housing:

- A passive construction, on a human scale, in the heart of the city of Louvain-la-Neuve.
- A grouped housing unit that brings together 11 young adults with CP, an Erasmus student with reduced mobility, a student working on a disability-related issue, two carers and their families.

A pilot project in terms of support:

- A personalized life project.
- A maximum of autonomy with a maximum of social links.

The people | the CP

- Cerebral Palsy (CP) is the result of a non-progressive, permanent brain injury that occurs in the developing brain.
- A syndrome combines posture and movement disorders. It is sometimes accompanied by associated disorders: epilepsy, speech, vision, etc.

Volunteer work

The volunteer will be a part of the household and will share the values of Côte-à-Côte. He will accompany the people in their daily life; bring his own ideas and his energy in a mixed group of people.



Depending on his abilities and his adaptation, the volunteer will perform the following tasks alone or with someone:

- Manage daily life in a team setting while emphasizing the autonomy ability of each resident.
- Assist residents in their autonomy and self-sufficiency project.
- Organize community activities with the residents.
- Ensure safety and well-being of the residents by handling morning and evening activities. Morning: breakfast, preparation for outings, maybe escorting to the place of activity. Evening: dinner, leisure activities, getting to bed.
- As needed: ensure the security and well-being of residents at night.

Accommodation

The accommodation is included, it is a basic shared room. With access to shared bathroom and shower facilities.

Food

The volunteer will only receive an evening meal, for the rest of the meals the volunteer has to do his/her own shopping. There are several supermarkets and restaurants nearby.

Meeting point

21, Boucle des Métiers, 1348 Ottignies-Louvain-la-Neuve, Belgium. Arrival days are from Monday to Friday between 11am and 4pm. Outside these hours, we recommend you to take a hotel room on your own.

To get to the meeting point you can take the train from the airport: <https://www.belgiantrain.be/en>.

Language

The volunteer must be able to speak French or have a good knowledge of it in order to make himself understood by the residents.

Location



- **Nearest airports:**
 - Zaventem Airport (Brussels Airport) – 27 km
 - Brussels South Charleroi Airport – 40 km
- **Nearest train station:** Louvain-la-Neuve Station – 2 km

As the organization is located in the same city as SVI, you will have the opportunity to meet its members as well as participating in all local SVI activities.

About Louvain-la-Neuve

Located 30 km from Brussels in the heart of Walloon Brabant, the site of the University of Louvain-la-Neuve welcomes over 20,000 students in its eleven faculties.

Created in 1971 by the university, this city is one of the youngest in Europe. A city in the countryside, it offers an exceptional living environment to students, researchers, professors and inhabitants. Museums, cinemas, theaters, concert and exhibition halls, a swimming pool and sports center, restaurants and cafés, shops and green spaces: all contribute to the quality of its environment.

Its entirely pedestrianized urban center allows easy access to all academic buildings and provides an environment where students, researchers, professors and residents meet and form a unique social, cultural and economic fabric.

AUBERGE DE JEUNESSE JACQUES BREL

Code	SVI-AJJB25
Name	Auberge de jeunesse Jacques Brel
Location	Brussels
Dates	Permanent project (except July and August). Project duration: 2 months minimum
Type	ENV – CULT – LEAD
Age	18+
Volunteers	2
Fees	Fee for the first 2 months: 146€

The conditions (participation fees, visa, accommodation, food, dates and cancellations) are subject to change

The project includes:

- Introduction course
- One night at the bed and breakfast in Louvain-la-Neuve
- Follow-up during the whole project
- Invitation letter or additional documentation for visa application.
- Accommodation in a shared room

Not included in the project:

- Vacation days
- Pocket money
- Travel expenses
- Flight tickets
- Health insurance (mandatory to present before arrival)
- Transportation from the airport to the project
- Meals: the volunteer has to buy and cook his own food, there is a kitchen available.

Optional:

- Online French course for 10 sessions of 1h each: 180€
- Transportation: to and from the airport: 160€ (variable price)

Presentation of the partner

The association is affiliated to Hosteling International, the founding movement of the Youth Hostels.

As such, it offers accommodation to young people in particular (but not exclusively) who travel individually, with friends or in groups. It offers basic hotel services: catering (canteen with sustainable label), meeting rooms, a bar with local and craft beers. The association is also recognized by the Youth Service of the Wallonia-Brussels Federation as a meeting and accommodation center and organizes activities with young people aimed at developing their reflection on the world around them and taking an active part in it.

Volunteer work

Being an alternative hostel, the work carried out will mainly be hotel work:

- Creation and implementation of activities with the public (exhibitions, debates, visits, karaoke, etc.).
- Helping with the association's sustainability initiatives (reducing food waste, permaculture etc.).
- Helping with the smooth running of the service (occasional help with washing up and cleaning the rooms).
- Helping in welcoming users and running the bar.
- 1 or 2 weekend services (either Saturday or Sunday) may be requested.

Accommodation

- Single room - shower/toilet shared with the second volunteer.
- Services: access to the kitchen of the users.
- Wifi.
- Access to the laundry (washer-dryer).

Food

- Morning: breakfast (majority of organic products).
- Other meals: the volunteer has to buy and cook his own food, there is a kitchen available.

Language

- English (fluent)
- French (this is a plus!)
- Spanish (this is a plus!)

Location



- **Nearest airports:**
 - Zaventem Airport (Brussels Airport) – 14 km
 - Brussels South Charleroi Airport – 60 km
- **Nearest train station:** Central Station - 200 m

Meeting point

Rue du Poirier, 8, 1348 Ottignies-Louvain-la-Neuve, Belgium. Arrival days are from Monday to Friday between 11am and 4pm. Outside these hours, we recommend you to take a hotel room on your own.

To get to the meeting point you can take the train from the airport: <https://www.belgiantrain.be/en>.

About Brussels

Brussels is not only the Belgian capital but also the European capital. The city combines the characteristics of a large city with the charm of smaller, quieter towns. Modern with a classical touch, the streets of Brussels are full of charm and history. Brussels can be visited on foot, by bike, but also by horse-drawn carriage.

No, the people of Brussels do not eat fries every day. That said, they are still proud of their fry shops, and there can be a queue of people outside the best ones at all hours. A very cosmopolitan city, Brussels offers a range of different cuisines from around the world scattered throughout the city.



LE FAGOTIN

Code	BE-SVI-fagotin
Name	Le Fagotin
Location	Stoumont
Dates	Permanent project
Type	ENVI – EDU – ANI
Age	18+
Volunteers	2
Fees	Fee for the first month: 384€

The conditions (participation fees, visa, accommodation, food, dates and cancellations) are subject to change



The project includes:

- Introduction course
- One night at the bed and breakfast in Louvain-la-Neuve
- Follow-up during the whole project
- Invitation letter or additional documentation for visa application.
- Accommodation in a shared room
- Train tickets from Louvain-la-Neuve to Coo.

Not included in the project:

- Vacation days
- Pocket money
- Travel expenses
- Flight tickets
- Health insurance (mandatory to present before arrival)
- Transportation from the airport to the project
- Meals: the volunteer has to buy and cook his own food, there is a kitchen available.

Optional:

- Each additional month of stay will cost 217€
- Online French course for 10 sessions of 1h each: 180€
- Transportation: to and from the airport (taxi) : 160€ (variable price)

Presentation of the partner

Since its creation in 1995, the Fagotin association has progressively developed its activities until it became a major educational and touristic actor in the Belgian Ardennes. Today, the association is a combination of a «Nature Center», an «Animation Farm» and a «Meeting and Accommodation Center». Their values are centered around four key notions: CITIZENSHIP, SUSTAINABILITY, SOLIDARITY, GOODWILL.

Both in summer and winter, the Fagotin team, made up of experienced animators, offers camps, field trips, workshops, walks, guided tours, training sessions, meetings, etc. in order to promote the wonders of Wallonia's natural heritage to everyone, especially to young people.

Usually (outside of the COVID period), the team is made up of 16 employees who welcome more than 10,000 people each year. The nearest train station is Coo. A bus runs from Coo station to Le Fagotin.

Volunteer work

The tasks will vary depending on the needs of the farm. Volunteers can either help with the more physical work in the farm or with the social tasks. They will also take part in everyday tasks (cooking, washing the dishes, welcoming groups, etc.).

The work in the farm consists of many different tasks: maintenance of green areas (mowing, trimming, vegetable garden), maintenance of the pastures (fixing fences, cutting wood), maintenance of the animal shelters (construction and reparation), small interior and exterior improvements (painting, etc.).

The social tasks consist of helping the team with the organization of activities. Some activities are for children and teenagers, others are more touristic activities (donkey rides, hiking with drinks, etc.).





© Le Fagotin

Accommodation

Volunteers can either sleep in a tent (with or without access to showers and toilets) or in a residential center. The participation fee per day / per person will vary according to the option chosen by the volunteer.

Food

The volunteer has to buy and cook his own food, there is a kitchen available.

Location



- **Nearest airports:**
 - Liege Airport – 42 km
 - Maastricht Airport – 85 km
 - Brussels South Charleroi Airport – 129 km
 - Zaventem Airport (Brussels Airport) – 134 km
- **Nearest train station:** Stoumont Station – 6 Km

Language

It is recommended to be able to speak a few words of French or to be willing to learn French.

Meeting point

Rue du Poirier, 8, 1348 Ottignies-Louvain-la-Neuve, Belgium. Arrival days are from Monday to Friday between 11am and 4pm. Outside these hours, we recommend you to take a hotel room on your own.

To get to the meeting point you can take the train from the airport: <https://www.belgiantrain.be/en>.

About Stoumont

Our partner association is in Stoumont, in the heart of the Belgian Ardennes. It is a quiet village, surrounded by forests. It is the perfect place to go for a walk in the forest. It has already worked with volunteers. Each year, about fifteen interns come and help on the farm. They make it available to the organization. It has bought another building in which work will be done. It will be converted into a residential center.

Stoumont is a very special place in the province of Liège. Difference in altitude within the municipality is around 400 meters and it has many water sources. This is the perfect place to really get to know. It is a very small town with very few activities.

RENAISSANCE

Code	SVI_REN_2022
Name	Renaissance
Location	Braine L'Alleud
Dates	Permanent project. Project duration: 1 to 6 months
Type	SOCI – DISA – EDU
Age	18+
Volunteers	2
Fees	Fee for the first month: 163€

The conditions (participation fees, visa, accommodation, food, dates and cancellations) are subject to change



The project includes:

- Transportation from Louvain-la-Neuve to the project site (Braine-l'Alleud)
- Introduction course and welcoming
- One night at the bed and breakfast in Louvain-la-Neuve.
- Follow-up during the whole project
- Invitation letter or additional documentation for visa application
- Meals
- Accommodation in a private or shared room

Not included in the project:

- Vacation days
- Pocket money
- Travel expenses
- Flight tickets
- Health insurance (mandatory to present before arrival)
- Transportation from the airport to the project

Optional:

- Online French course for 10 sessions of 1h each: 180€
- Transportation to and from the airport (taxi): 160€ (variable price)

Presentation of the partner

Renaissance ASBL is a residential center hosting 20 adults who were born with physical disabilities (cerebral palsy). The center aims at giving those people an adapted living place. Renaissance is a residential center in which each occupant has to take part in the daily tasks according to their abilities. Various specialized people supervise these tasks: educators, occupational therapists, speech therapists, nurses, a caseworker, and physiotherapists, a multidisciplinary team in which each person accompanies the resident individually within the group. The center highlights the importance of cultural exchange, openness, and encounters.

Volunteer work

During the project, the volunteer will take part in the community life of the residential center under the supervision of staff members. They will share meals with the residents, among other things:

- Life at the center: cooking, food stocks control, laundry, cleaning activities etc.
- Leisure and creative activities: theater, well-being, painting, expression, comics.
- Activities organized out of the center: shopping, cultural excursions, sports, etc.
- Special events: Run & Bike (adapted bicycles), Christmas market.

The volunteers will not be in charge of medical care (washing the residents, putting them to bed, waking them up, etc.). A meeting will take place on a monthly basis to report on the volunteer's stay.

The volunteers are allowed to meet their tutor or the director of the center whenever they want. They will never have to stay alone with the residents and will be given safety instructions by a prevention adviser.

Accommodation

Accommodation in a private room will be provided.

Food

Three meals a day will be provided to the volunteers.



Specific information

- The volunteers must have the maturity needed to face the challenges of daily life with physically disabled people.
- Prior knowledge of French is essential because some residents only speak French and need clear indications.
- The center needs volunteers who are dynamic, motivated, eager to learn and to take initiative, able to question themselves and to accept criticism from the staff.
- They need to be aware that they will live several months with different people who have a way of life, which is sometimes totally opposed to our daily life.

Location



- **Nearest airports:**
 - Zaventem Airport (Brussels Airport) – 24 km
 - Brussels South Charleroi Airport – 27 km
- **Nearest train station:** Braine-l'Alleud Station – 3 km

Language

Minimum basic level of French.

Meeting point

Rue du Poirier, 8, 1348 Ottignies-Louvain-la-Neuve, Belgium. Arrival days are from Monday to Friday between 11am and 4pm. Outside these hours, we recommend you to take a hotel room on your own.

To get to the meeting point you can take the train from the airport: <https://www.belgiantrain.be/en>.

About Braine-L'Alleud

As far as leisure is concerned, Braine-l'Alleud is home to a cinema complex, many sports halls, and a cultural center. Braine-l'Alleud is not far away from the historic site of Waterloo. Many hiking routes are available in the area.

Braine-l'Alleud is a Walloon municipality in the Belgian province of Walloon Brabant, about 20 kilometres south of Brussels. The Braine-l'Alleud municipality includes the former municipalities of Braine-l'Alleud proper, Ophain-Bois-Seigneur-Isaac, and Lillois-Witterzée. It also includes the hamlet of Sart-Moulin, the inverted name of which inspired Hergé's Moulinsart castle. The famous Lion of Waterloo where the eponymous battle took place is in the territory of Braine-l'Alleud. It is a very small town with very few activities.

AUBERGE DE JEUNESSE DE BOUILLON

Code	SVI-BAUTO-EXT
Name	Auberge de jeunesse
Location	Bouillon (Province du Luxembourg)
Dates	Permanent project. From March to September. 1 months minimum to 6 months
Type	EDU – SOCI – MANU
Age	18+
Volunteers	1
Fees	Fee for the first month: 164€

The conditions (participation fees, visa, accommodation, food, dates and cancellations) are subject to change

The project includes:

- Introduction course
- One night at the bed and breakfast in Louvain-la-Neuve
- Follow-up during the whole project
- Invitation letter or additional documentation for visa application.
- Meals
- Accommodation in a shared room
- Train tickets from Louvain-la-Neuve to Bouillon.

Not included in the project:

- Vacation days
- Pocket money
- Travel expenses
- Flight tickets
- Health insurance (mandatory to present before arrival)
- Transportation from the airport to the project

Optional:

- Online French course for 10 sessions of 1h each: 180€
- Transportation: to and from the airport (taxi) : 160€ (variable price)

Presentation of the partner

The Belgian Youth Hostel is a member of "Hostelling International network". It is a worldwide network of Not-for-Profit Youth Hostel Associations, their local members are all passionate advocates of sustainable travel and are dedicated to connecting young people and local communities in a peaceful and respectful way. In Belgium, the "Auberges de Jeunesse" (youth hostels) are recognized as non profit organizations and as youth organizations by the Wallonie Bruxelles Federation (the french speaking government of Belgium).

The Youth Hostel in Bouillon overlooks the city, offering a stunning view of the Semois and the fortress, one of Europe's most impressive castles. Magnificent view of the castle and the city, on a wooded site of 18,000m². The Auberge welcomes people from all walks of life in a young and relaxed atmosphere.

Volunteer work

- Reception of the public.
- Animation, creation or organization of activities to facilitate encounters.
- Help with communication .
- Helping in the kitchen and the bar .
- If possible, meeting with other volunteers in other youth hostels to create a common project.
- Other tasks depending on the profile: help with maintenance.

The schedule will depend on the tasks:

- 8:00 - 12:00
- 9:00 - 16:00
- 16:00 - 21:00





Accommodation

Private room with a private bathroom.

Food

Some meals are offered, others are at the expense of the volunteer depending on the group meals.

Location



- **Nearest airport:** Luxemburg Airport – 184 km
- **Nearest train station:** Paliseul Station – 116 km
15min by car, 1h by bus
- **Nearest bus line:** 10min walk

Meeting point

Rue du Poirier, 8, 1348 Ottignies-Louvain-la-Neuve, Belgium. Arrival days are from Monday to Friday between 11am and 4pm. Outside these hours, we recommend you to take a hotel room on your own.

To get to the meeting point you can take the train from the airport: <https://www.belgiantrain.be/en>.

Language

The volunteer should at least be fluent in English, if he cannot speak French.

About Bouillon

The locality is an important tourist centre.

Bouillon is a town in the south of Belgium, close to the French border. It is famous for the medieval castle of Bouillon overlooking the Semois. The Godefroid de Bouillon Archaeoscope is a multi-media attraction on the banks of the river, illustrating the life and times of Godefroid de Bouillon, a former resident of the castle and a crusader. Nearby is the Ducal Museum, which traces the history of the region through art, weapons and folk artefacts.

AUBERGE DE JEUNESSE MALMEDY

Code	SVI-B
Name	Auberge de jeunesse Malmédy
Location	Malmédy (Province de Liège)
Dates	Permanent project. From March to October
Type	EDU – SOCI – MANU
Age	18+
Volunteers	1
Fees	Fee for the first month: 163€

The conditions (participation fees, visa, accommodation, food, dates and cancellations) are subject to change



The project includes:

- Introduction course
- One night at the bed and breakfast in Louvain-la-Neuve
- Follow-up during the whole project
- Invitation letter or additional documentation for visa application.
- Meals
- Accommodation in a shared room
- Train tickets from Louvain-la-Neuve to Malmédy.

Not included in the project:

- Vacation days
- Pocket money
- Travel expenses
- Flight tickets
- Health insurance (mandatory to present before arrival)
- Transportation from the airport to the project

Optional:

- Online French course for 10 sessions of 1h each: 180€
- Transportation: to and from the airport (taxi) : 160€ (variable price)

Presentation of the partner

Our hostel is a member of "Hostelling International network". It is a worldwide network of Not-for-Profit Youth Hostel Associations, their local members are all passionate advocates of sustainable travel and are dedicated to connecting young people and local communities in a peaceful and respectful way. In Belgium, the "Auberges de Jeunesse" (youth hostels) are recognized as non profit organizations and as youth organizations by the Wallonie Bruxelles Federation (the French speaking government of Belgium).

Our hostel is a green hostel and is located 2 km from the small town of the center in Bevercé. We are close to the Hautes Fagnes with its beautiful landscape. What makes us special is our activities! We have an aerial course, a climbing wall, scooters and other activities in our infrastructure. Our hostel is a sports hostel, so you have to like nature, sports, peace and quiet, hiking, and be able to be alone at times and keep yourself busy. Our team is also festive! The hosts and receptionists will be happy to inform you about the festivities in the region. The best time to come into this project is between March and October.

Volunteer work

- Reception of the public.
- Animation, creation or organization of activities to facilitate encounters.
- Help with communication.
- Helping in the kitchen and bar.
- If possible, meeting with other volunteers in other youth hostels to create a common project Other tasks: help with cleaning common areas, rooms, gardening (mowing, leaves etc.).

Working time:

- The volunteer works 24 hrs per week.
- The volunteer does max 4 or 5 hrs per day.

The schedule would be:

- Either in the morning from 07:00 to 12:00 or a little later depending on the tasks.
- Or reception help at 4pm or during the day if there is an activity.

Flexibility in the hours, but with a schedule known in advance so that he can plan things on his own.

Accommodation

Private room, but volunteers may have to change rooms during the stay, depending on the planning, but it will always be in a private room.

Food

Meals are provided and offered, if no meals are available, the volunteer is given a lump sum for his meal.

Language

A basic knowledge of French is essential.

Meeting point

Rue du Poirier, 8, 1348 Ottignies-Louvain-la-Neuve, Belgium. Arrival days are from Monday to Friday between 11am and 4pm. Outside these hours, we recommend you to take a hotel room on your own.

To get to the meeting point you can take the train from the airport: <https://www.belgiantrain.be/en>.

Location



- **Nearest airport:** Zaventem Airport (Brussels Airport) – 4 km
- **Nearest train station:** Nossegem Station – 2.6 km

About Malmedy

Malmedy is a charming town in the Walloon region of Belgium, more precisely in the province of Liège. It's nestled in the heart of the Belgian Ardennes, surrounded by picturesque green countryside, making it an ideal place for outdoor enthusiasts and nature lovers.

Stunning natural landscape:

Malmedy is surrounded by wooded hills, dense forests and winding rivers, offering an exceptional natural setting for hiking, mountain biking, camping and other outdoor activities. Nature lovers will appreciate the many opportunities for discovery in the surrounding area.

Historical heritage:

Malmedy boasts a rich historical heritage, including the beautiful 18th-century St. Peter's Cathedral and the Benedictine Abbey. The cobbled streets of the town center are lined with traditional houses, creating a picturesque atmosphere.

Cultural events:

The town regularly hosts cultural and festive events, such as music festivals, art exhibitions and local markets. These events are the perfect opportunity to discover the local culture and meet Malmedy's friendly inhabitants.

Belgian cuisine:

Malmedy's restaurants and cafés offer delicious Belgian cuisine, with must-try dishes such as moules-frites, waffles and, of course, a wide selection of Belgian beers. Volunteers will also have the opportunity to sample delicious local specialties.

Friendly atmosphere:

Malmedy is a welcoming and friendly town, where it's easy to feel at home. The locals are generally open to visitors and happy to share their love of their town.

Proximity to outdoor activities: In addition to outdoor activities in Malmedy itself, the town is an ideal starting point for exploring the Ardennes, such a hiking, biking, skiing in winter or discovering the local flora and fauna.

As a volunteer in Malmedy, you'll have the chance to live in a beautiful natural setting, explore a rich history and immerse yourself in a warm and welcoming Belgian culture. Whether you want to contribute to local community projects or simply enjoy the peaceful atmosphere of the town, Malmedy offers a unique experience in Belgium.

AUBERGE DE JEUNESSE MONS

Code	SVI-ADJ Ms
Name	Auberge de jeunesse Mons
Location	Mons (Hainaut)
Dates	Permanent project. The project welcomes volunteers all year round except in July and August. Project duration: 1 to 6 months
Type	EDU – SOCI – MANU
Age	18+
Volunteers	1
Fees	Fee for the first month: 153€

The conditions (participation fees, visa, accommodation, food, dates and cancellations) are subject to change

The project includes:

- Introduction course
- One night at the bed and breakfast in Louvain-la-Neuve
- Follow-up during the whole project
- Invitation letter or additional documentation for visa application.
- Meals
- Accommodation in a shared room
- Train tickets from Louvain la neuve to Mons.

Not included in the project:

- Vacation days
- Pocket money
- Travel expenses
- Flight tickets
- Health insurance (mandatory to present before arrival)
- Transportation from the airport to the project

Optional:

- Online French course for 10 sessions of 1h each: 180€
- Transportation: to and from the airport (taxi) : 160€ (variable price)

Presentation of the partner

The association is affiliated to Hosteling International, the founding movement of the Youth Hostels. As such, it offers accommodation to young people in particular (but not exclusively) who travel individually, with friends or in groups. It offers basic hotel services: catering (canteen with sustainable label), meeting rooms, a bar with local and craft beers. The association is also recognized by the Youth Service of the Wallonia-Brussels Federation as a meeting and accommodation center and organizes activities with young people aimed at developing their reflection on the world around them and taking an active part in it.

Volunteer work

Being an alternative hostel, the work carried out will be mainly hotel work.

- Creation and implementation of activities with the public (exhibitions, debates, visits, karaoke, etc.
- Helping with the association's sustainability initiatives (reducing food waste, permaculture Etc.).
- Helping with the smooth running of the service (occasional help with washing up and cleaning the rooms).
- Helping to welcome users and running the bar.



Accommodation

- Single room - shower/toilet shared with the room of the second volunteer
- Services: access to the kitchen of the users
- Wifi
- Access to the laundry (washer-dryer)

Food

- **Morning:** breakfast (majority organic products).
- **Noon:** complete balanced meal.
- **Evening:** complete balanced meal.

Language

- English (fluent)
- French (this is a plus!)

Meeting point

Rue du Poirier, 8, 1348 Ottignies-Louvain-la-Neuve, Belgium. Arrival days are from Monday to Friday between 11am and 4pm. Outside these hours, we recommend you to take a hotel room on your own.

To get to the meeting point you can take the train from the airport: <https://www.belgiantrain.be/en>.

Location



- **Nearest airport:** 40 km
- **Nearest train station:** 1 km
- **Nearest bus line:** 10 meters

About Mons

French-speaking city and capital of Hainaut, Mons is located in the west of Belgium. With its cobbled streets, the magnificent Grand-Place and its imposing Belfry, Mons has everything to play for in the big league. Between heritage, culture and gastronomy, you can't help but be happy.

Little information about the city of Mons: European Capital of Culture 2015



IMPROVEMENT WORK IN THE SVI OFFICE

Code	DIY-25
Name	Improvement work in the SVI office
Location	Rue du Poirier, 8, 1348 Ottignies-Louvain-la-Neuve
Dates	Permanent project
Type	MANU – LANG-L
Age	18+
Volunteers	3
Fees	Fee for one week: 80€

The conditions (participation fees, visa, accommodation, food, dates and cancellations) are subject to change



Presentation of the partner

In 2024, to meet its growing needs, the SVI relocated its offices to a large house on the UCLouvain campus in Louvain-la-Neuve. This house is shared between the association's offices and a living space for students. However, it requires maintenance and improvement work.

In this context, we are looking for 2 to 3 resourceful and creative volunteers to participate in this project. If you enjoy DIY and want to experience a unique intercultural experience, this project is made for you!

Volunteer work

- The volunteers will contribute to various tasks, working 4 hours per day:
- Installing shelves (drilling into the walls)
- Interior painting
- Cleaning and organizing
- Filling documents
- Organizing communal spaces
- Participating in social events (organizing a BBQ for members or neighborhood residents).
- Other activities, depending on the needs
- The work is diverse and takes place in a friendly atmosphere, conducive to cultural exchanges.

Accommodation

Volunteers will be accommodated in host families or in a youth hostel located next to our office. Laundry facilities are available in Louvain-la-Neuve. Volunteers can use the Wi-Fi from our office or the Wi-Fi from the university.

Food

All meals are provided. Volunteers will prepare weekday lunches collectively. The campus offers many bars and restaurants at affordable prices.

Language

The project allows you to speak either French or English. You will meet people from all over the world, so English will often be the language used.

Specific information

It is possible to follow French lessons. Volunteers must contact us to know all the information.

Leisure and activities for volunteers

Outside of working hours, volunteers will be able to:

- Participate in cultural and social activities organized by the university or the SVI.
- Join the university's sports activities (such as climbing).
- Explore Louvain-la-Neuve and its surroundings, or visit Brussels and other major Belgian cities easily accessible.

Meeting point

Rue du Poirier, 8, 1348 Ottignies-Louvain-la-Neuve, Belgium.

Arrival days are from Monday to Friday between 11am and 4pm. Outside these hours, we recommend you to take a hotel room on your own.

To get to the meeting point you can take the train from the airport: <https://www.belgiantrain.be/en>.

Location



- **Nearest airport:** Brussels Airport (Zaventem) – 30km
- **Nearest train station:** Louvain-la-Neuve station – about 10 minutes' walk from our office
- **Nearest bus station:** Louvain-la-Neuve bus station – about 10 minutes' walk from our office

About Louvain-la-Neuve

A university town in the heart of Belgium

Louvain-la-Neuve is a dynamic, entirely pedestrian city built around the Catholic University of Louvain (UCLouvain). It attracts students from all over the world, creating a unique blend of cultures and an atmosphere conducive to international initiatives.

An engaged community and a sustainable environment

The city is known for its rich associative fabric and environmental projects, such as urban gardens, sustainable resource management, and green initiatives. These characteristics make Louvain-la-Neuve an inspiring place for solidarity projects.

A vibrant cultural life

Louvain-la-Neuve is a cultural and festive place:

- Cultural activities, student parties and events throughout the year, including the 24H bike race of Louvain-La-Neuve (in October), the largest student festival in Belgium (or perhaps the world!)
- Iconic museums such as the Musée L and the Hergé Museum (about the author of the Tintin comics)
- Proximity to Brussels (40 minutes by train), offering easy access to the European capital.



PRIVATE ENGLISH AND FRENCH LESSONS ONLINE WITH SVI – A TICKET TO A NEW DESTINATION

The SVI co-ordinators never stop pampering you with new activities to help you spend a pleasant and useful winter. Why not improve your English or French skills before the big departure or just for fun?



English lessons with an online teacher



French lessons with an online teacher

SVI offers you the chance to master your English or French via online private lessons. All the teachers who work with SVI are competent and qualified. Whether you're learning the language for study, career, travel, volunteering or personal development, one-to-one online tuition is a fun and interactive way to develop the skills you need.

You can discuss your goals and interests with your teacher to work out a study plan. Together you'll find a pace and approach that suits you. Courses can focus on different aspects of the language, as you wish, or be specialised: business English (French), for example.

All levels, including complete beginners!

To register, send an e-mail to: language@servicevolontaire.org

LES PAPOTES DU SVI! ENGLISH AND FRENCH CONVERSATION TABLES

Learning the language - yes, it's a complicated, multilateral process. You need to be able to assimilate the different structures of the language. So doing a bit of grammar and conjugation is an essential step!

But you mustn't forget the end goal. Whatever the case, we learn the language to...? To talk!

Come and have a chat at **Les papotes du SVI!** English and French conversation tables catch their breath and wish you a warm welcome. What's in store for you?

We'll be getting together to talk about anything and everything once a week. The online discussions will be led by Dacha, a French and English teacher.

All levels except complete beginners!

A package of 4 tables will cost 20 euros.

To register, send an e-mail to:
language@servicevolontaire.org

See you there and very soon!



Dacha

French and English
teacher

PAYMENT METHODS



1. Cash on arrival day



2. Bank transfer

Account holder: Service Volontaire International, ASBL

Account holder's address: 21 Boucle des Métiers, 1348 Ottignies-Louvain-la-Neuve, Belgium

IBAN: BE65 0688 8931 2696

BIC: GKCCBEBB



3. Paypal

https://www.paypal.com/donate/?hosted_button_id=RM5UG28H9A2CE



SERVICE VOLONTAIRE INTERNATIONAL BELGIUM

Postal address (headquarter)	Rue du Poirier, 8, 1348 Ottignies-Louvain-la-Neuve
Website	www.servicevolontaire.org
Office hours	Monday – Friday 10 AM to 6 PM (GMT + 2:00)
Phone	Belgium: +32 2 888 67 13, +32 2 840 72 00, +32 69 60 90 65, +32 10 87 05 4 France: +33 3 66 72 90 20, + 33 9 75 18 40 39 Switzerland: +41 325 11 07 31 Canada: +1 514 400 25 78 USA: +1 872 216 69 91 United Kingdom: +445601569069 Russia: +7 4993488140 Vietnam: +84 4 62845535, +84 4 22154993
Whatsapp	+32 2 888 67 13
Facebook	www.facebook.com/servicevolontaireinternational
Instagram	www.instagram.com/servicevolontaireinternational
Emergency contact number	0044560158080

**TO RECIEVE OUR FRIDAY LIST
SEND US AN EMAIL TO**

incoming@servicevolontaire.org